



# INDOFINE Chemical Company, Inc.

121 Stryker Lane, Bldg. 30, Suite 1 • Hillsborough, NJ 08844 • U.S.A.

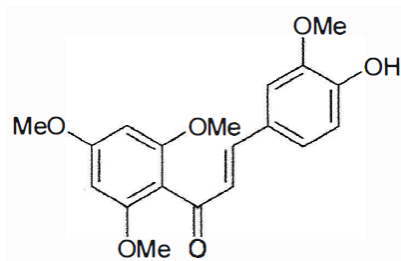
Phone: (908) 359-6778 • FAX: (908) 359-1179

website: [www.indofinechemical.com](http://www.indofinechemical.com)

e-mail: [chemical@indofinechemical.com](mailto:chemical@indofinechemical.com)

## CERTIFICATE OF ANALYSIS

<u>Catalog Number:</u>	19-565
<u>Product Name:</u>	<b>4-HYDROXY-2',3,4',6'-TETRAMETHOXYCHALCONE</b>
<u>Lot Number:</u>	0212251
<u>Chemical Formula:</u>	C <sub>19</sub> H <sub>20</sub> O <sub>6</sub>
<u>Molecular Weight:</u>	344.37
<u>Melting Point:</u>	134-137°C
<u>Appearance:</u>	Dark cream powder
<u>Solubility:</u>	Soluble in Chloroform
<u>TLC:</u>	Chloroform : Methanol (9:1)
<u>NMR Spectrum:</u>	Enclosed (Confirms to the structure)
<u>Storage:</u>	Cool dry place
<u>Purity (HPLC):</u>	97.24%





# INDOFINE Chemical Company, Inc.

121 Stryker Lane, Bldg. 30, Suite 1 • Hillsborough, NJ 08844 • U.S.A.

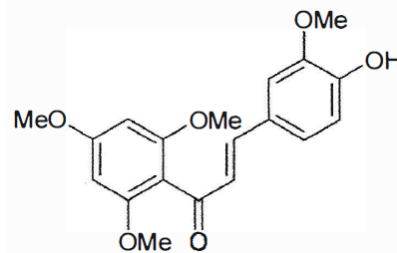
Phone: (908) 359-6778 • Fax: (908) 359-1179

Website: [www.indofinechemical.com](http://www.indofinechemical.com)

E-mail: [chemical@indofinechemical.com](mailto:chemical@indofinechemical.com)

## HPLC ANALYSIS

Acquired by : Sanjeev  
 Sample Name : 4-Hydroxy-2',3,4',6'-tetramethoxychalcone  
 Sample ID : Lot No:0212251  
 Injection Volume : 20 uL  
 Data Filename : 080413F.lcd  
 Method Filename : Linear Gradient.M.lcm

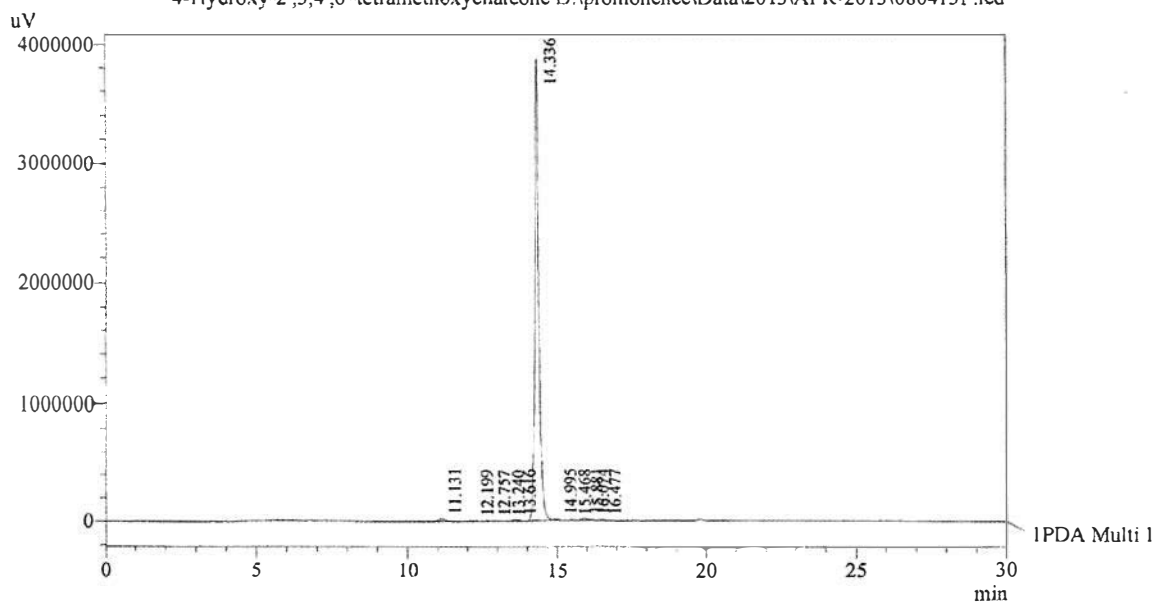


Column : LUNA C-18(2), (250mm x4.6mm 5.0µ)  
 Flow : 1.000 mL/min.  
 Mobile Phase : A(Water) B(Acetonitrile)  
 0.01 90 10  
 12.0 10 90  
 20.0 10 90  
 23.0 90 10  
 30.0 90 10

Catalog No.: 19-565  
 Product Name: 4-Hydroxy-2',3,4',6'-tetramethoxy  
 chalcone  
 Lot No.: 0212251

Chromatogram

4-Hydroxy-2',3,4',6'-tetramethoxychalcone D:\promonence\Data\2013\APR-2013\080413F.lcd



I PDA Multi 1 / 230nm 4nm

PeakTable

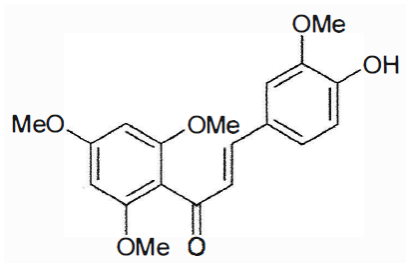
PDA Ch1 230nm 4nm

Peak#	Name	Ret. Time	Area	Area %	Relative Retention Time
1	RT:11.131	11.131	271351	0.75	0.78
2	RT:12.199	12.199	36666	0.10	0.85
3	RT:12.757	12.757	36116	0.10	0.89
4	RT:13.240	13.240	36573	0.10	0.92
5	RT:13.616	13.616	135405	0.38	0.95
6	4-OH-2',3,4',6'-tetramethoxyc	14.336	34989746	97.24	1.00
7	RT:14.995	14.995	73010	0.20	1.05
8	RT:15.468	15.468	52499	0.15	1.08
9	RT:15.881	15.881	198738	0.55	1.11
10	RT:16.074	16.074	84754	0.24	1.12
11	RT:16.477	16.477	66188	0.18	1.15
Total			35981046	100.00	



# INDOFINE Chemical Company, Inc.

121 Stryker Lane, Bldg. 30, Suite 1  
Hillsborough, NJ 08844

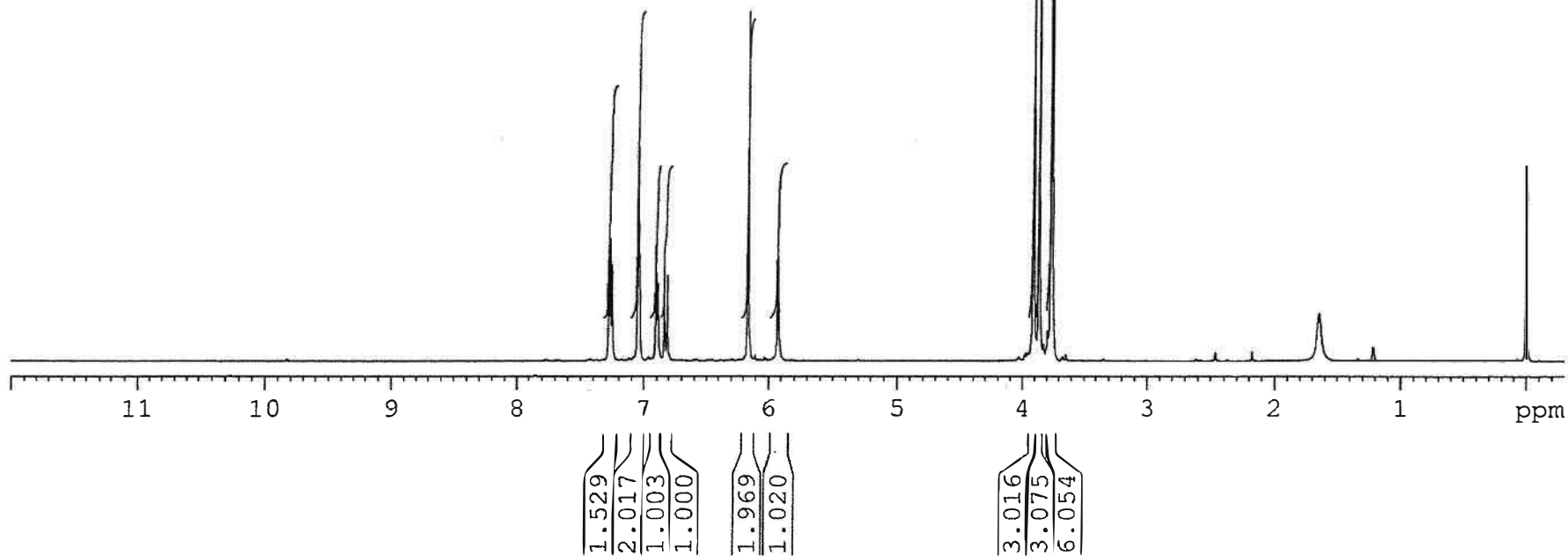


Catalog No.: 19-565  
Product Name: 4-Hydroxy-2',3,4',6'-tetramethoxy  
chalcone  
Lot No.: 0212251

SOLVENT CDCl3  
NS 16  
DS 0  
SWH 9803.922 Hz  
FIDRES 0.326819 Hz  
AQ 1.5299480 sec  
RG 22.6  
DW 51.000 usec  
DE 6.00 usec  
TE 298.2 K  
D1 1.50000000 sec  
TD0 1

ICC-APR-36  
1H IN CDCL3  
AVANCE-600

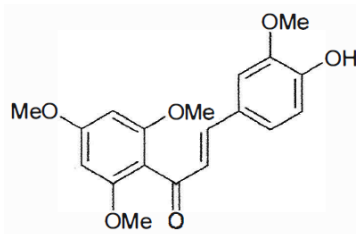
===== CHANNEL f1 =====  
NUC1 1H  
P1 7.50 usec  
PL1 2.60 dB  
PL1W 6.62584448 W  
SFO1 600.3345228 MHz  
SI 32768  
SF 600.3300121 MHz  
WDW EM  
SSB 0  
LB 0.30 Hz  
GB 0  
PC 1.00





# INDOFINE Chemical Company, Inc.

121 Stryker Lane, Bldg. 30, Suite 1  
Hillsborough, NJ 08844



Catalog No.: 19-565  
Product Name: 4-Hydroxy-2',3,4',6'-tetramethoxy chalcone  
Lot No.: 0212251

SOLVENT CDCl3  
NS 16  
DS 0  
SWH 9803.922 Hz  
FIDRES 0.326819 Hz  
AQ 1.5299480 sec  
RG 22.6  
DW 51.000 usec  
DE 6.00 usec  
TE 298.2 K  
D1 1.50000000 sec  
TDO 1

ICC-APR-36  
1H IN CDCL3  
AVANCE-600

==== CHANNEL f1 =====  
NUC1 1H  
P1 7.50 usec  
PL1 2.60 dB  
PL1W 6.62584448 W  
SF01 600.3345228 MHz  
SI 32768  
SF 600.3300121 MHz  
WDW EM  
SSB 0  
LB 0.30 Hz  
GB 0  
PC 1.00

